



Your **definitive** source
for quality pre-owned
equipment.

Artisan Technology Group

(217) 352-9330 | sales@artisantg.com | artisantg.com

Full-service, independent repair center

with experienced engineers and technicians on staff.

We buy your excess, underutilized, and idle equipment

along with credit for buybacks and trade-ins.

Custom engineering

so your equipment works exactly as you specify.

- Critical and expedited services
- In stock / Ready-to-ship
- Leasing / Rentals / Demos
- ITAR-certified secure asset solutions

Expert team | Trust guarantee | 100% satisfaction

All trademarks, brand names, and brands appearing herein are the property of their respective owners.

Find the *VIAVI Solutions / JDSU MAPF+1GK0X1FP* at our website: **Click *HERE***

Multiple Application Platform

MAP Series



MAP Master



MAP Benchtop

Key Features

- Hot-swappable cassettes (cassettes can be inserted or removed without powering down)
- Dynamic MAP firmware and console that automatically identifies installed cassettes
- PC-based MAP Console program with drivers, ActiveX, Dynamic link libraries (DLL), LabVIEW and simulation mode
- Color display
- RS-232 and GPIB interface

Applications

- Periodic reconfiguration and/or expansion capability
- High reliability/availability in a 24/7 manufacturing environment

Safety Information

- Optical source cassettes, when installed in the MAP chassis, meet the requirements of standard IEC 60825-1(2002) and comply with 21 CFR 1040.10 except deviations per Laser Notice No. 50, July 2001
- CE Compliance plus UL3101-1 and CAN/CSA-C22.2 No. 1010.1

The Multiple Application Platform (MAP) is a flexible instrumentation platform used for optical test and measurement applications. It is available in two formats: a 19-inch 8-slot Master (MAP+2M00) and a 9.5-inch 3-slot Benchtop (MAP+2B00). They feature a common hot-swappable backplane compatible with over 15 different types of instrumentation cassettes.

The MAP Master and MAP Benchtop include a 9-key keypad, color display and remote communication ports.

Chassis Selection

MAP is used when instrumentation selection needs to be based on current requirements without compromising future requirements. The MAP+2B00 and MAP+2M00 provide the most cost-effective solutions for test sets requiring three or fewer cassettes and four to eight cassettes respectively. In both cases, future expansions are possible by populating the empty slots (if available) or adding a second independent MAP+2B00 or MAP+2M00.



MAP Master (MAP+2M00)

The MAP Master is built on a fully modular architecture. The main controller module, power supply module, keypad/display module and remote interface module are all field replaceable, thus making maintenance fast and simple. The keypad/display module and remote interface module of the MAP Master is interchangeable for rear mounting. Handling and rackmounting are made easy by using the practical handles located at the front and back of each chassis. When used on a bench, the tilting feet hold the chassis at an optimal angle for monitor visibility and keypad accessibility.

Key Features

- **Front or back fiber connection**
- **8-slot capacity**
- **All modules are field replaceable:**
 - **controller**
 - **power supply**
 - **keypad/display**
 - **remote interface**



MAP Benchtop (MAP+2B00)

The MAP Benchtop brings the MAP products to your lab bench without compromising performance. Its form factor and lower cost make it ideal for small test-sets. When test needs grow, software applications developed for the MAP Benchtop can be transferred to a MAP Master without any modifications.

Key Features

- **3-slot capacity**
- **compatible with external USB keyboard**

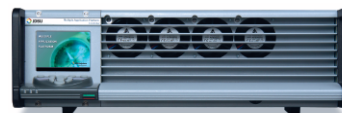
MAP Master Reconfigurability

Connectors Accessible at Front

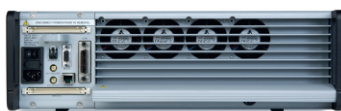


Front

Connectors Accessible at Rear



Front



Rear



Rear

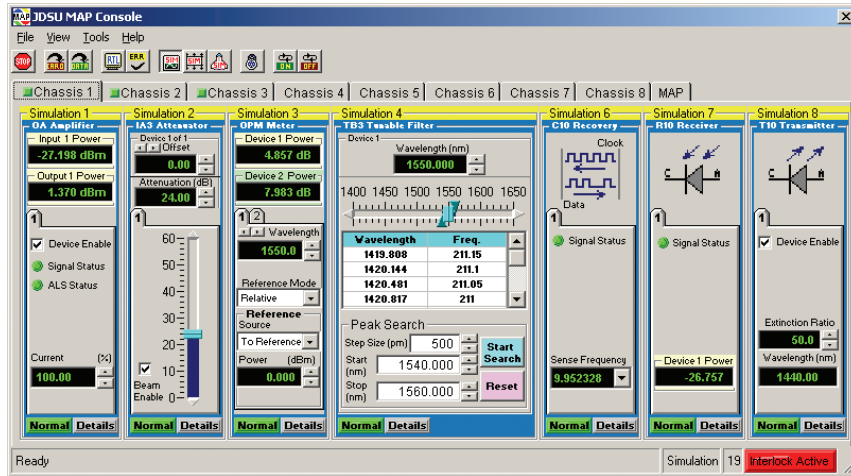
Software

Intuitive MAP Console and Drivers

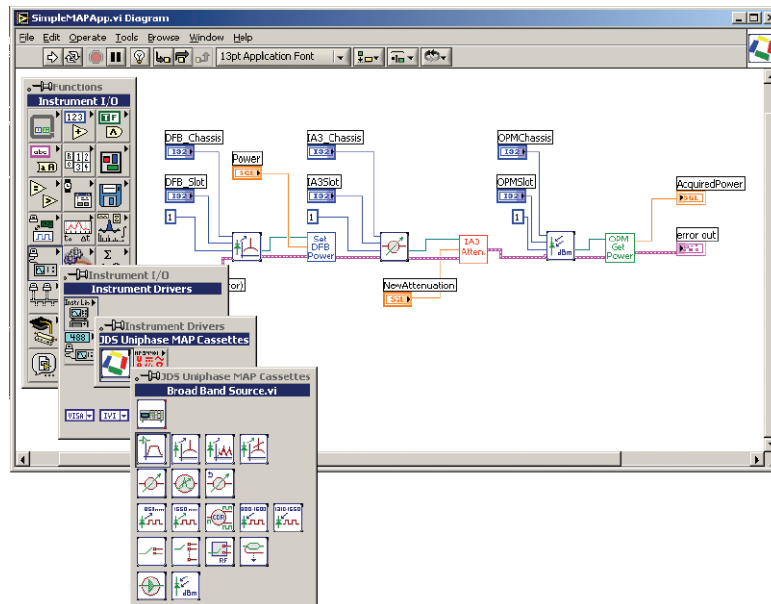
MAP is supplied with comprehensive PC-based instrument drivers and MAP Console for added functionality. Drivers supplied include ActiveX, DLL, and LabVIEW. These provide full control of the cassettes and are compatible with all the standard Automation Development Environments (ADEs) including LabVIEW, Visual Basic™, and TestPoint™. These drivers provide drop-in instrument programming capabilities, allowing test programmers to focus on test level functions and sequences rather than the details required to communicate with the specific cassettes in the MAP system. During test execution, the MAP Console can also be placed in a supervisory mode and used to monitor and control the MAP platform to help support troubleshooting and to minimize downtime. The MAP Console comes with a built-in simulator allowing Automation Developers to capture system configurations who do most of their development off-line, freeing real hardware for other purposes. These features make test automation development and debugging fast and easy.

4

View of MAP Console Program



Typical LabVIEW Implementation of the ActiveX Drivers



5

Specifications

Parameter	MAP Master	MAP Benchtop
Capacity	8 single-slot cassettes/chassis	3 single-slot cassettes/chassis
Power	100 to 125 V AC / 200 to 240 V AC, 50/60 Hz Field-replaceable	100 to 125 V AC 200 to 240 V AC, 50/60 Hz
Power consumption	200 V A	200 V A
Mounting	Rackmount Benchtop (front, center, or rear)	Rackmount Benchtop (front)
Rackmount kit	Included	Optional (MAP+2A10)
Display LCD color	VGA	VGA
Display dimensions (H x W)	7 x 5 cm	7 x 5 cm
Resolution	640 x 234 pixels	640 x 234 pixels
Remote interface	RS-232, GPIB	RS-232, GPIB
External keyboard	N/A	USB Keyboard
Video output	N/A	VGA
Video input	N/A	BNC Connector (NTSC)
VGA output	N/A	15-pin D-sub connector
Safety interlock	Fail-safe hardware-controlled	
Operating temperature	0 to 50 °C	
Storage temperature	-30 to 60 °C	
Humidity	< 80% RH, 0 to 40 °C non-condensing	
Dimensions (W x H x D)	44.91 x 13.24 x 52.37 cm (3U high, standard 19-inch width)	22.5 x 14.8 x 43.0 cm (3U high, standard 1/2 19-inch width)
Weight	14.3 kg	8.6 kg

Ordering Information

For more information on this or other products and their availability, please contact your local JDSU account manager or JDSU directly at 1-800-498-JDSU (5378) in North America and +800-5378-JDSU worldwide or via e-mail at customer.service@jdsu.com.

MAP Master Chassis (MAP+2M00)

Product Code	Description
MAP+2A01	MAP 19-inch Chassis
MAP+2A02	MAP Power Supply Module
MAP+2M01	MAP Master Main Control Module
MAP+2M02	MAP Master Local Interface Module
MAP+2M03	MAP Master Remote Interface Module
MAP+2A03	MAP Rackmount Kit
MAP+2A06	MAP Cassette Blanking Plates (8)
MAP+2A04	MAP Safety Interlock Key
MAP+2A09	MAP Software and Documentation CD
10108925	MAP User's Manual
21057090	MAP Programming Guide

MAP Benchtop (MAP+2B00)

Product Code	Description
MAP+2A04	MAP Safety Interlock Key
MAP+2A06	MAP Cassette Blanking Plates (3)
MAP+2A09	MAP Software and Documentation CD
10108925	MAP User's Manual
21057090	MAP Programming Guide

Option

MAP+2A10	Optional 19-inch rackmount kit
----------	--------------------------------

ActiveX and Visual Basic are registered trademarks of Microsoft Corporation.
 LabVIEW is a registered trademark of National Instruments Corporation.
 TestPoint is a registered trademark of Keithley Instruments, Inc.
 UL is a registered trademark of Underwriters Laboratories Inc.

All statements, technical information and recommendations related to the products herein are based upon information believed to be reliable or accurate. However, the accuracy or completeness thereof is not guaranteed, and no responsibility is assumed for any inaccuracies. The user assumes all risks and liability whatsoever in connection with the use of a product or its application. JDSU reserves the right to change at any time without notice the design, specifications, function, fit or form of its products described herein, including withdrawal at any time of a product offered for sale herein. JDSU makes no representations that the products herein are free from any intellectual property claims of others. Please contact JDSU for more information. JDSU and the JDSU logo are trademarks of JDS Uniphase Corporation. Other trademarks are the property of their respective holders. ©2007 JDS Uniphase Corporation. All rights reserved. 10116396 Rev. 010 01/07 MAP.TM.AE

Test & Measurement Regional Sales

NORTH AMERICA TEL: 1 866 228 3762 FAX: +1 301 353 9216	LATIN AMERICA TEL: +55 11 5503 3800 FAX: +55 11 5505 1598	ASIA PACIFIC TEL: +852 2892 0990 FAX: +852 2892 0770	EMEA TEL: +49 7121 86 2222 FAX: +49 7121 86 1222	WEBSITE: www.jdsu.com
---------------------------------------------------------------------	------------------------------------------------------------------------	-------------------------------------------------------------------	---------------------------------------------------------------	----------------------------------------------------------------

Artisan Technology Group is an independent supplier of quality pre-owned equipment

Gold-standard solutions

Extend the life of your critical industrial, commercial, and military systems with our superior service and support.

We buy equipment

Planning to upgrade your current equipment? Have surplus equipment taking up shelf space? We'll give it a new home.

Learn more!

Visit us at artisanng.com for more info on price quotes, drivers, technical specifications, manuals, and documentation.

Artisan Scientific Corporation dba Artisan Technology Group is not an affiliate, representative, or authorized distributor for any manufacturer listed herein.

We're here to make your life easier. How can we help you today?

(217) 352-9330 | sales@artisanng.com | artisanng.com

